
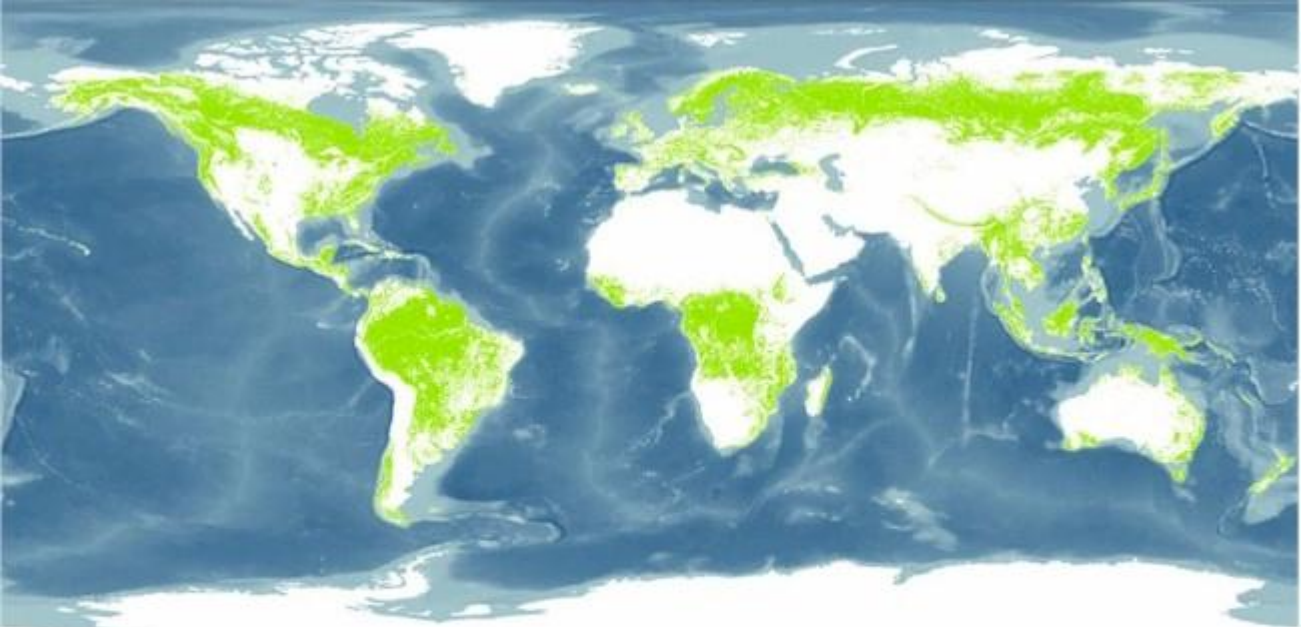



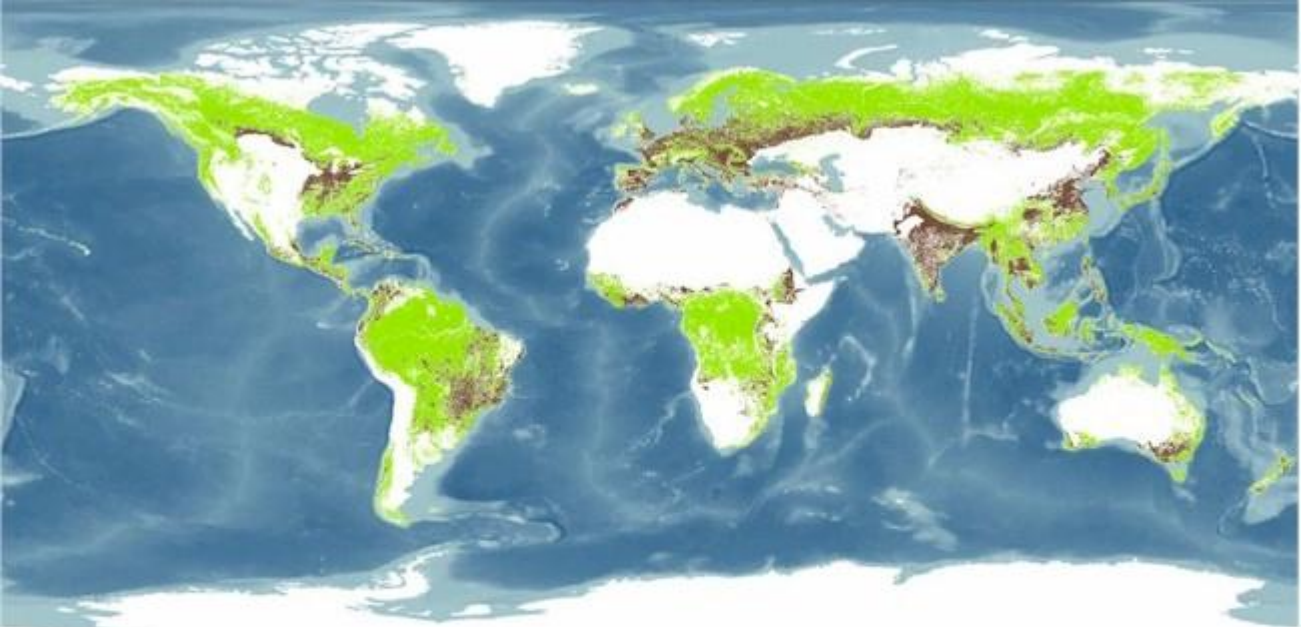
Source: World Resources Institute / South Dakota State University, 2009

 Original forest cover




Source: World Resources Institute / South Dakota State University, 2009

 Current forest cover



Source: World Resources Institute / South Dakota State University, 2009


 Current forest cover


 Formerly forest, now croplands



Source: World Resources Institute / South Dakota State University, 2009

 Current forest cover



 Formerly forest, now croplands

 Formerly forest, now pasture



Source: World Resources Institute / South Dakota State University, 2009

 Intact Forest Landscapes
 Working Forest Landscapes

 Formerly forest, now croplands
 Formerly forest, now pasture



Source: World Resources Institute / South Dakota State University, 2009

